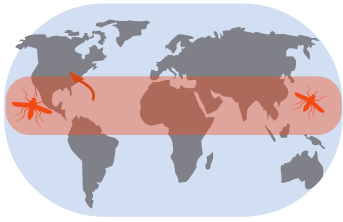


# THE AEADES AEGYPTI MOSQUITO PROBLEM



*Aedes aegypti* is native to tropical areas worldwide.

This mosquito has become an invasive species in many areas.

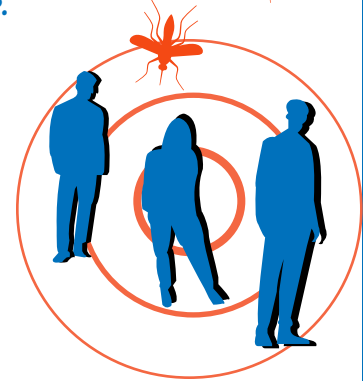
Prior to 2013, this mosquito was not in Fresno County.

**IT HAS SPREAD THROUGHOUT FRESNO COUNTY COMMUNITIES.**



*Aedes aegypti* usually does not fly more than a quarter mile from its development site.

**They have been observed following people into vehicles, where they can be transported to our schools, workplaces, or many miles away.**

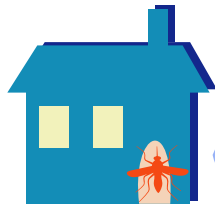


Humans are a preferred host (source of blood) for these mosquitoes.

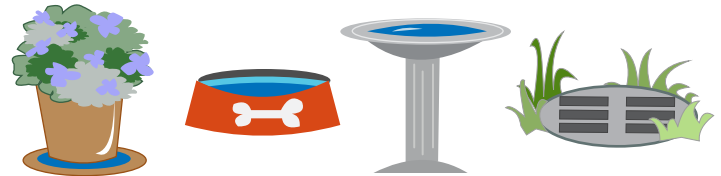


They readily enter through open doors, pet doors, or torn window screens **AT EVERY OPPORTUNITY.**

Outside or inside your home, **they will bite repeatedly** throughout the day & into the night.



This mosquito utilizes small containers & yard drainage systems



in residential properties to lay its eggs.

**Why is this important?**

When water is introduced into these, the eggs will hatch, offspring will develop, & adult mosquitoes will emerge in about a week.

**Unless...**

...the container is emptied or eliminated.



**Empty water from all containers at least once a week to prevent mosquito development on your property.**

To avoid mosquito bites, use an EPA-registered insect repellent.

**ALWAYS READ & FOLLOW LABEL DIRECTIONS FOR USE.**



Pesticides can be used to suppress adult mosquitoes, *but control is short lived.*



**Unless the development sites are eliminated, the next generation of newly hatched mosquitoes will quickly replace those killed with pesticides.**

*Every resident must do their part to eliminate the development sites that exist in their yards.*

**THIS WILL REDUCE THE MOSQUITO POPULATION.**

